

Sustainability Studio 18

The spring curricular platform, Sustainability Studio, is a interdisciplinary, experimental, evolving, open laboratory for cross pollination & innovative development of sustainability research and art/design projects. In the 6 classes taught in the lab, faculty are developing new ways of working across and within curriculum. Public events, exhibitions, and open studio hours are available for the MassArt and Boston community.



Exhibitions

January 17 - February 1, 2018
Dear Climate is a collection of agitprop posters and meditative audio experiences that help you meet, befriend, and become climate change. Distributed freely at dearclimate.net



Event highlights

Friday February 23 4:30pm
CJ Valerus, Aquaponics design and sustainable farming.



Wednesday March 14 9:45am
Emma Kurman-Faber; n
Food and Art in America's Test Kitchen

Wednesday March 28 11:00am
Maria Molteni, Performance Workshop
Pipeline Resistance Movement

Wednesday March 28 6:00pm
Dan Borelli artists talk
The Cloud of Unknowing: Our Future Is Our History

Wednesday April 18 11:00am
John Osorio Buck
On crickets, stoves, and utopi



Thursday April 19 11:15-1:00
Andrew McFarland
Livable Streets Emerald Necklace Initiative

Classes

Natural Resource Materials/Art, Jennifer Cole, Monday 9:45a - 12:45pm
Through this course, we will investigate how materials are obtained from Earth, how they are mined and processed, what the sustainability impacts are, how much energy is involved, what human health and environmental impacts occur from using these materials, and how we might use more intensive recycling redesign to make them more environmentally friendly.

Utopic Worlds Maura Smyth Tuesday 9:45am-12:45pm
What does an ideal society look like? How is it defined, and how do these definitions change from age to age, and depending on who is defining it?

Eating and the Environment Jennifer Cole Wednesday 9:45am-12:45pm
Together we will investigate topics such as genetic modification of food, meat and dairy, additives, organic vs. local food, the farm bill, food subsidies, aquaculture, emerging infectious diseases, packaging and transportation, fast food, food and demographics, food safety, and nutritional supplements.

Biomimicry Jennifer Carr Wednesday 6:30-9:30pm
In this course we will study the structure and function of biological systems as models for the design and engineering of materials; we will look at biological systems and solving problems by mimicking nature.

TIME: Accumulate Amber Tourlentes Thursday 8am-1pm
This course asks the questions: how and where is culture and how is community being produced and sustained. Through the lens of social and environmental justice How is cultural production, design and art making, being reimagined through the lens of social and environmental justice?

Surface Design on Fabric: Print Jill Thibault Thursday 1:30-6:30pm
An introduction to various methods of screen printing on fabric with dyes and pigments, with an experimental approach to thinking about zero waste and how questions of sustainability can inform approaches to printing on fabric.

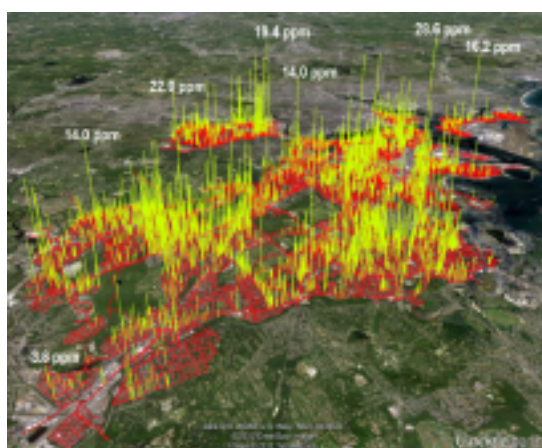
TIME: State of Urgency Stephanie Cardon Friday 8am-1pm
State of Urgency asks you to define what is most critically at stake for you, your communities, your generation. The urgency will carry over into our practice in this class, in which speed sometimes will be of the essence.

Sustainability Science Kristian DeMary, Fri 1:45-4:45pm
What is the nature of sustainability? How can we learn from and with nature, its biological diversity and ecosystems, to become more resilient?

Civic Engagement

March/April 2018

Pipeline Resistance is a civic engagement pilot project connecting MassArt first year students in Jane D. Marsching's TIME: Art and Ecology class with a Boston-based activist group, Mothers Out Front, and an area ecologist, Nathan Phillips, BU Department of Earth and the Environment. Together they will investigate the problems of natural gas pipelines in an urban context, particularly focusing on the many gas leaks in our aging infrastructure.



Directors: Joanne Lukitsh and Jane D. Marsching, Sustainability Fellows

Curator: Ryan Townsend, Art Ed MAT candidate
Open studio hours: Mondays 1-3
Stop by, read, have a cup of tea, make, converse...

For more information: jmarsching@massart.edu